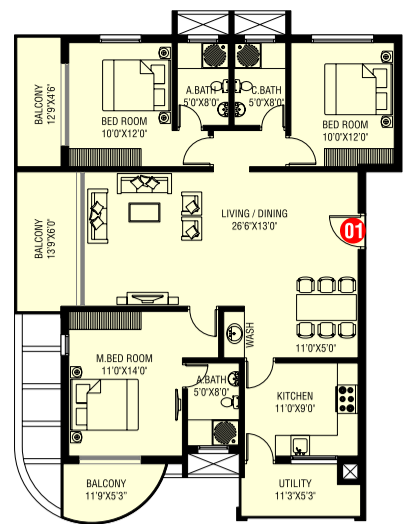


IN-LAND® in its 25th glorious year has a firmer commitment to excel in all endeavors. Our dedication multiplies with every new step. IN-LAND® implies unequaled professionalism and integrity.

**OUR CREATIONS**

Our creations are fine studies in the art of detailing and stand testimony to our passion for quality. In fact, meeting customer expectations has always been the key focus of IN-LAND®.

FLAT NO. 01 in 2nd & 4th Floor  
1885 Sft

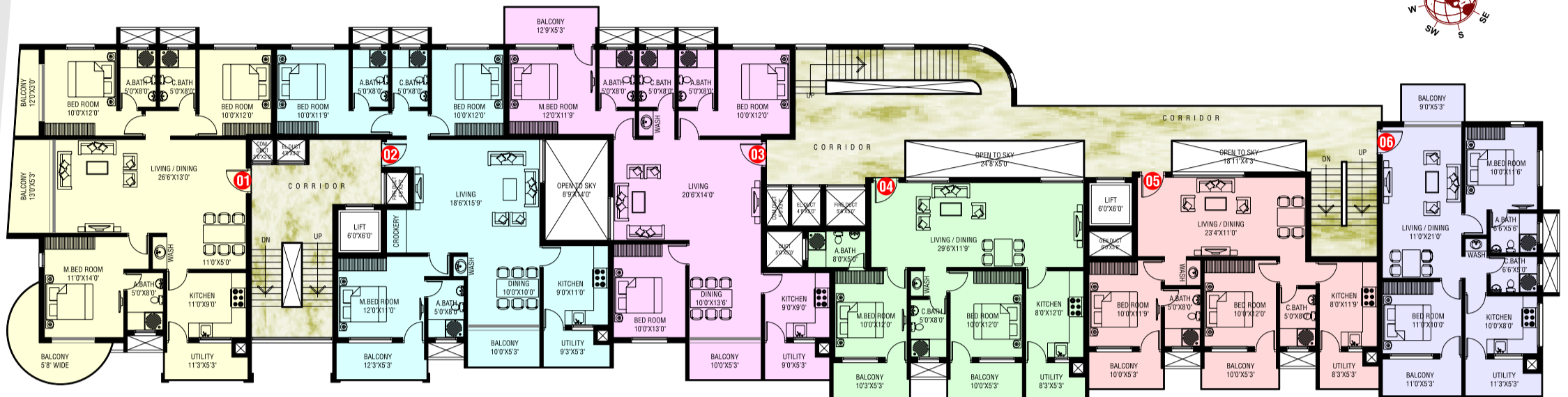


*area statement*

FLAT NO.	TYPE	AREA
01	3 BHK	1910 Sft
02	3 BHK	1780 Sft
03	3 BHK	1785 Sft
04	2 BHK	1345 Sft
05	2 BHK	1255 Sft
06	2 BHK	1160 Sft

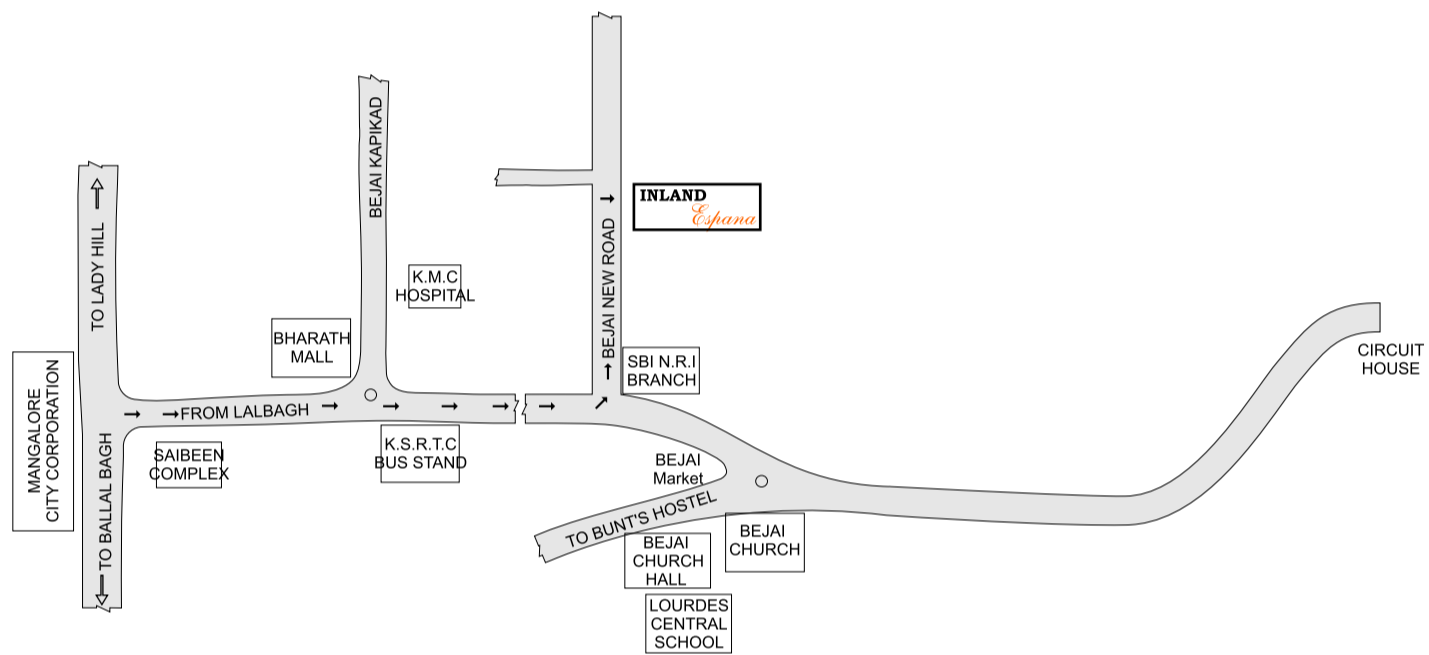
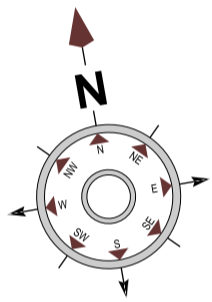
*Typical Floor Plan*

Road



*Location Map*

Note: Not To Scale



**IN-LAND®**  
**INFRASTRUCTURE DEVELOPERS PVT. LTD.**

"Inland Ornate", 3<sup>rd</sup> Floor, Navbharath Circle, Mangalore - 575 003.  
Phone: +91 824 - 2496110, 2492180, 2491795 Fax: +91 824 - 2496291  
E-mail: info@inlandbuilders.net Web: www.inlandbuilders.net  
Mobile : +91 99720 89099, +91 98801 38015



Regd. Office : 1st Floor, No. 525, 8th Main, 5th Cross, HMT Layout, R.T. Nagar, Bangalore- 560 032,  
Telefax : +91 80 23545277 Mobile : +91 98801 45145

Consulting Engineers : **S.K. Associates** Mangalore  
Elevation Designer: **Studio Friday Architects** Mumbai  
Structural Consultant : **Vimal - Anil** Mangalore  
Land Owner : **John Walter Moreas**

The brochure is purely conceptual and is not a legal offering. The promoters / architects reserve the right to add / delete / alter any detail / specification / elevation mentioned herein



**INLAND**  
*Espana*

*Stylish Residential Apartment*

Bejai New Road, Mangalore



## A Tryst with Royalty

The Entrance, The Lobby, The Façade, The Elevation, everything about it is a standing testimony to sheer grandeur with due attention to meticulous detail.

INLAND ESPANA is a place you intend to call your home. Located at the heart of Bejai and close proximity to Bejai Church, Lourdes Central School, KSRTC Bus Stand, and Bharath Mall...



### Highlights:

- ◆ 30 meticulously designed Apartments in Ground + 5 Floors.
- ◆ 6 Flats in each floor,  
2 BHK measuring 1160, 1255 & 1345 sq.ft.  
3 BHK measuring 1780, 1785, 1885 & 1910 sq. ft.
- ◆ Spacious VISITOR'S LOUNGE in the Ground Floor.
- ◆ TWO AUTOMATIC ELEVATORS, each with 8 passenger capacity.
- ◆ GYMNASIUM in the Terrace floor.
- ◆ GENERATOR for common and apartment lighting with sound proof enclosure.
- ◆ INTERCOM facility.
- ◆ C.C.T.V facility.
- ◆ RETICULATED GAS connection with pre-paid meter for all the apartments (at extra cost).
- ◆ CAR PARKING (at extra cost).
- ◆ CONCRETE INTERLOCK PAVING for car parking
- ◆ MODULAR ELECTRICAL SWITCHES
- ◆ SUPERIOR DESIGNER LOCKS for all inside doors
- ◆ CHILDREN'S PLAY AREA in the Ground Floor

### Specifications

#### GENERAL

- ◆ Fully framed R.C.C. structure laterite walls for exteriors and concrete blocks for internal walls.
- ◆ Double coat exterior plastering.
- ◆ External paint of the building with anti-fungal exterior emulsion .
- ◆ Putty finished emulsion paint for internal walls & ceilings.
- ◆ Attractive & elegant melamine polished main entrance door.
- ◆ Superior Vitrified floor tiles (24" x 24") inside the apartments
- ◆ Polished wooden door frames with laminated flush shutters for rooms
- ◆ R.C.C. door frames with good quality fibrotech shutters for toilets
- ◆ Aluminum windows with sliding shutters
- ◆ Overhead water tank and underground sump tank with required pumps
- ◆ Water supply with borewell in addition to the Corporation water connection.

#### DRAWING / DINING

- ◆ Telephone / T.V.Point / Intercom connection.
- ◆ Counter type Wash Basin for Dining.

#### BEDROOMS :

- ◆ TV point and telephone points in Master bedroom.
- ◆ AC provision in the Master bedroom.

#### BATHROOMS:

- ◆ Anti-skid Ceramic tile flooring and glazed tile dado upto full height.
- ◆ Wall mounted E.W.C for all toilets
- ◆ Premium Quality CP fittings in all toilets

#### KITCHEN / UTILITY :

- ◆ Provision for exhaust fan
- ◆ Premium Quality stainless steel sink with drain board .
- ◆ Polished & bullnosed black granite counter.
- ◆ 2'0" glazed tile dado above platform.
- ◆ Provision for fixing water purifier and washing machine.



## Every Creation, A Mark Of Distinction



### Ongoing Projects



**Inland Windsors (Res)**  
Airport Road, Mary Hill,  
Mangalore



**Inland Eon (Res)**  
Matadakani Road, Gandhinagar, Mangalore



**Inland Echelon (Res)**  
Ballabagh off M. G. Road, Mangalore



**Inland Elan (Res)**  
Matadakani, Mangalore



**Inland Ethos (Res)**  
Mahamaya Temple Road, Mangalore



**Inland Sovereign (Res)**  
Mission Gori Road, Mangalore



**Inland Imaad (Res)**  
Hegdenagar, Bangalore

### Completed Projects



**Inland Ornate (Com)**  
Navbharathi Circle, Mangalore



**Inland Galore (Com)**  
Kankanady, Mangalore



**Inland Salute (Res)**  
Konchadi 4th Mile, Mangalore



**Inland Pristine (Res)**  
Kulshakar, Mangalore



**Inland Evoke (Res)**  
Kankanady, Mangalore



**Inland Avenue (Com)**  
M.G. Road, Mangalore



**Inland Eminence (Res)**  
Kadri New Road, Mangalore



**Embassy Court (Res)**  
Falnir, Mangalore



**Inland Clusters (Res Villa)**  
Kottar Chowki, Mangalore



**Inland Ebony (Res)**  
Kadri Main Road, Mangalore



**Inland Excellency (Res)**  
Arya Samaj Road, Mangalore



**Inland Majestic (Res)**  
Warehouse Road,  
Mannagudde, Mangalore



**Inland Monarch (Com & Res)**  
Near C.V. Nayak Hall  
Kadi Main Road



**Inland Elite (Res)**  
Near Navbharathi Circle  
Kodialballi, Mangalore



**Inland Residency (Res)**  
Valencia, Mangalore



**Inland Enclave (Res)**  
Mannagudde, Mangalore



**Embassy Plaza (Com)**  
Pumpwell, Mangalore



**Inland Encore (Res)**  
Kadri Kambal, Mangalore



**Sterling Chambers (Com)**  
Kodialballi, Mangalore



**Golden Chambers (Com.Res)**  
Carstreet, Mangalore



**Inland Exotic (Res)**  
Benson Town, Bangalore



**Inland Empress (Res)**  
R.T. Nagar, Bangalore



**Inland Efin (Res)**  
Anand Nagar, Bangalore



**Inland Everglades (Res)**  
Hebbal, Kempapura, Bangalore

