



INLAND *Mayura*

Residential Apartments & Commercial Spaces
Main Road, Puttur



Make your home in the relaxing green of historic Puttur

INLAND

Mayura

A new perspective for life

Surrounded by lush green hills and blessed with copious rainfall, Puttur, rich agricultural town of Dakshina Kannada is steeped in history. Its name derives from a pond of pearls (Muthu) situated in a 1000-year old temple, whose deity is said to guard the prosperity of the town. Puttur also houses a 300-year old mosque and a 180-year old church built by missionaries from Goa.

Arecanut farms and cashew plantations unfold in every direction, as Puttur glides its way, serenely to modernity. Already the second largest habitation in the district, Puttur is seeing major investments in its agro-based industries that are changing the face of this once red-tiled and narrow-laned town into a fashionable, forward-looking mini-city of smart buildings, malls and commercial activity.



INLAND Mayura

Residential Apartments



Flat No. 2 : 2 BHK
1210 Sq.Ft.



Flat No. 8 : 2 BHK
1190 Sq.Ft.



Flat No. 1 : 3 BHK
1595 Sq.Ft.



Flat No. 11 : 3 BHK
1550 Sq.Ft.

Isometric View

Highlights

- 72 meticulously designed Apartments in 6 Floors.
- 12 Flats in each floor, 2 BHK measuring 1170, 1190 & 1210 sq.ft. 3 BHK measuring 1550 & 1595 sq.ft.
- LOBBY in the Ground Floor.
- TWO AUTOMATIC ELEVATORS, each with 10 passenger capacity.
- GYMNASIUM in the Ground floor.
- CCTV for Security
- GARDEN & CHILDREN'S PLAY AREA in the first floor.
- SOCIETY OFFICE IN THE GROUND FLOOR.
- GENERATOR for common and apartment lighting with sound proof enclosure.
- INTERCOM facility.
- FIRE FIGHTING System.
- CAR PARKING (at extra cost).
- CONCRETE INTERLOCK PAVING for car parking
- MODULAR ELECTRICAL SWITCHES
- SUPERIOR DESIGNER LOCKS for all inside doors.

Specifications

GENERAL :

- Fully framed R.C.C. structure laterite walls for exteriors and concrete blocks for internal walls.
- Double coat exterior plastering.
- External paint of the building with antifungal exterior emulsion.
- Putty finished emulsion paint for internal walls.
- Attractive and elegant melamine polished main entrance door.
- Vitrified Floor Tiles (24" x 24") inside the apartments
- Wooden door frames with putty finished enamel painted flush shutters for rooms.
- R.C.C. door frames with good quality fibrotech shutters for toilets
- Aluminum windows with sliding shutters
- Overhead water tank and underground sump tank with required pumps
- Water supply from borewell in addition to the Muncipal water connection.



Representative Images by
INLAND Indoors
INTERIOR DESIGNERS

DRAWING / DINING :

- Telephone / T.V.Point / Intercom connection.
- Wash Basin for Dining.

BEDROOMS :

- TV point and telephone points in Master bedroom.
- AC provision in the Master bedroom.

BATHROOMS :

- Anti-skid Ceramic tile flooring and glazed tile dado upto 7' height.
- Wall mounted E.W.C for all toilets
- Premium Quality CP fittings in all toilets

KITCHEN / UTILITY :

- Provision for exhaust fan
- Premium quality Stainless steel sink with drain board
- Polished and bull nosed granite counter.
- 2'0" glazed tile dado above platform.
- Provision for fixing water purifier and washing machine.

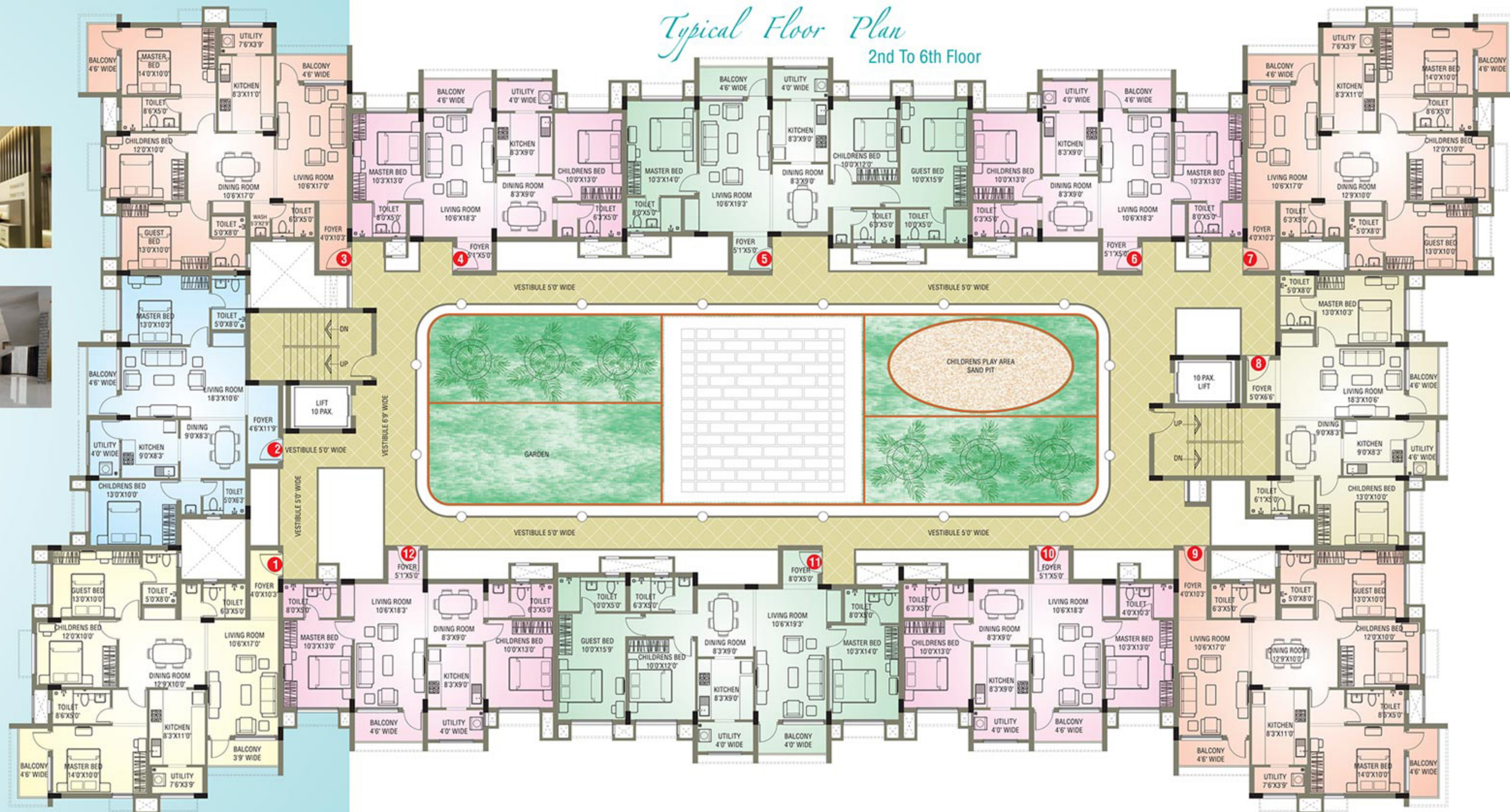
Area Statement

Flat No. 1 - 3 BHK : 1595 Sq.Ft.	Flat No. 7 - 3 BHK : 1595 Sq.Ft.
Flat No. 2 - 2 BHK : 1210 Sq.Ft.	Flat No. 8 - 2 BHK : 1190 Sq.Ft.
Flat No. 3 - 3 BHK : 1595 Sq.Ft.	Flat No. 9 - 3 BHK : 1595 Sq.Ft.
Flat No. 4 - 2 BHK : 1170 Sq.Ft.	Flat No. 10 - 2 BHK : 1170 Sq.Ft.
Flat No. 5 - 3 BHK : 1550 Sq.Ft.	Flat No. 11 - 3 BHK : 1550 Sq.Ft.
Flat No. 6 - 2 BHK : 1170 Sq.Ft.	Flat No. 12 - 2 BHK : 1170 Sq.Ft.



Typical Floor Plan

2nd To 6th Floor



INLAND Mayura

Commercial Complex



Ideally suited for : SHOWROOMS, SUPERMARKETS, POLY CLINICS, BAKERIES, BANKS and INSURANCE OFFICES

GROUND FLOOR PLAN



Highlights

- Commercial spaces ranging from 450 Sq.ft to 755 Sq.ft in Ground + 3 floors.
- ONE AUTOMATIC ELEVATOR of eight passenger capacity.
- GENERATOR for common and inside lighting with sound proof enclosure.
- Facade glazing.
- Common toilets in each floor.
- MODULAR ELECTRICAL SWITCHES.

TYPICAL FLOOR PLAN



Specifications

- Fully framed R.C.C. structure laterite walls for exteriors and concrete blocks for internal walls.
- Double coat exterior plastering.
- External painting of the building with antifungal exterior emulsion
- Putty finished emulsion paint for internal walls.
- Cable TV, Telephone connection inside the premises
- Overhead water tank and underground sump tank with required pumps.
- Water supply from borewell in addition to the municipal water connection.