

INLAND *Sunlight*
Moonlight

Residential Apartments

Kuloor - Kavour Road, Mangalore



INLAND

Sunlight Moonlight

A stylish twin tower residential complex, Inland Sunlight Moonlight is designed as your ideal home space – modern yet affordable.

Located in pristine greenery, close to prominent landmarks of the city – NH 66, MRPL, Panambur Port, Infosys, Kavoor Junction and enroute to Mangalore International Airport, the twin-tower complex is both a quiet abode away from your daily work stress as well as minutes away from important commercial and educational centres when you need them.

75 meticulously designed apartments in two towers of 5 floors and 12 floors, Inland Sunlight Moonlight is fitted with all modern amenities to make your life comfortable.



Great Homes - Modern Amenities - Smart Budget

Site Plan



INLAND Moonlight Typical Floor Plan Ground to 4th Floor

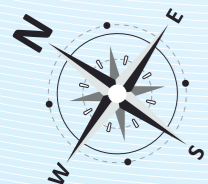


INLAND Sunlight Typical Floor Plan Ground to 11th Floor



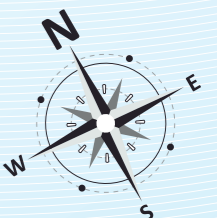
Area Statement

- Flat No. 1 (3 BHK) 1415 Sq.ft.
- Flat No. 2 (3 BHK) 1415 Sq.ft.
- Flat No. 3 (2 BHK) 1095 Sq.ft.
- Flat No. 4 (2 BHK) 1025 Sq.ft.
- Flat No. 5 (2 BHK) 1055 Sq.ft.



Area Statement

- Flat No. 1 (3 BHK) 1470 Sq.ft.
- Flat No. 2 (3 BHK) 1470 Sq.ft.
- Flat No. 3 (3 BHK) 1470 Sq.ft.



Highlights

- 75 meticulously designed apartments in two towers of 5 floors and 12 floors.
- **Inland Sunlight** - 5 Flats in each floor, **2 BHK** measuring 1025 sq.ft., 1055 sq.ft. and 1095 sq.ft. **3 BHK** measuring 1415 sq.ft.
 - ◊ **TWO AUTOMATIC ELEVATORS** one with 8 passenger capacity and one with 13 passenger cum stretcher.
- **Inland Moonlight** - 3 Flats in each floor, **3 BHK** measuring 1470 sq.ft.
 - ◊ **ONE AUTOMATIC ELEVATOR** of 8 passenger capacity
- **ENTRANCE LOBBY.**
- **GYMNASIUM** in the Basement floor.
- **LANDSCAPE** and **CHILDREN'S PLAY AREA** in the ground floor.
- **SOCIETY OFFICE** in the basement floor.
- **GENERATOR** for common and apartment lighting with sound proof enclosure.
- **INTERCOM** facility.
- **FIRE FIGHTING** System.
- **CAR PARKING** (at extra cost).
- **CONCRETE INTERLOCK PAVING** for car parking
- **MODULAR ELECTRICAL SWITCHES.**
- **SUPERIOR DESIGNER LOCKS** for all inside doors.

OTHER DETAILS :

GENERAL

- Fully framed R.C.C. structure laterite walls for exteriors and concrete blocks for internal walls.
- Double coat exterior plastering.
- External paint of the building with antifungal exterior emulsion.
- Putty finished emulsion paint for internal walls.
- Attractive and elegant melamine polished main entrance door.
- Vitrified Floor Tiles (24" x 24") inside the apartments.
- Wooden door frames with putty finished enamel painted flush shutters for rooms.
- R.C.C. door frames with good quality fibrotech shutters for toilets.
- Aluminum windows with sliding shutters.
- Overhead water tank and underground sump tank with required pumps.
- Water supply from borewell in addition to the Corporation water connection.

DRAWING / DINING

- Telephone / T.V. Point / Intercom connection.
- Wash Basin for Dining.

BEDROOMS :

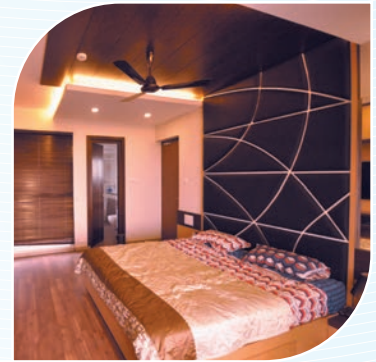
- TV point and telephone points in Master bedroom.
- AC provision in the Master bedroom.

BATHROOMS:

- Anti-skid Ceramic tile flooring and glazed tile dado upto 7' height.
- Wall mounted E.W.C for all toilets.
- Premium Quality CP fittings in all toilets.

KITCHEN / UTILITY :

- Provision for exhaust fan.
- Premium quality stainless steel sink with drain board .
- Polished and bull nosed granite counter.
- 2'0" glazed tile dado above platform.
- Provision for fixing water purifier and washing machine.



IN-LAND® *Credibility*

For IN-LAND, a home is a great deal more than four walls and a roof. It is a haven for the mind, body and soul. Hence our residential complexes are replete with amenities for rejuvenation. They include landscaped gardens, swimming pools and modern amenities of current day lifestyle.

Every project under the IN-LAND banner is built on a formidable grid of strategic planning and forefront technology which is powered by the expertise of various consultants.

Indeed, every square inch of your home is built with the same passion for excellence practiced over 29 years, that has created its own distinctive identity amongst the landmarks of India.

Every **IN-LAND®** *Creation, A Mark Of Distinction*

Ongoing Projects



Inland Impala (Com & Res)
Ullal, Mangalore



Inland Evince (Res)
Kadri Temple Road, Mangalore



Inland Scion (Res)
Falnir Main Road, Mangalore



Inland Estoria (Res)
Bishop Victor Road, Valencia, Mangalore



Inland Windsors Villas (Res)
Airport Road, Maryhill, Mangalore



Inland Imaad (Res)
Hegdenagar, Bengaluru



Inland Edilon (Res)
Yelahanka New Town, Bengaluru

Completed Projects



Inland Windsors (Res)
Airport Road, Mary Hill, Mangalore



Inland Espana (Res)
Bejai New Road, Mangalore



Inland Elan (Res)
Matadakani Road, Gandhinagar, Mangalore



Inland Eon (Res)
Matadakani Road, Gandhinagar, Mangalore



Inland Echelon (Res)
Ballalbagh off M. G. Road, Mangalore



Inland Ornate (Com)
Navbharath Circle, Mangalore



Inland Galore (Com)
Kankanady, Mangalore



Inland Ebony (Res)
Kadri Main Road, Mangalore



Inland Pristine (Res)
Kulshakar, Mangalore



Inland Evoke (Res)
Kankanady, Mangalore



Inland Encore (Res)
Kadri Kambla, Mangalore



Inland Sovereign (Res)
Mission Gori Road, Mannagudda, Mangalore



Inland Avenue (Com)
M.G. Road, Mangalore



Inland Eminence (Res)
Kadri New Road, Mangalore



Embassy Court (Res)
Falnir, Mangalore



Inland Salute (Res)
Konchadi 4th Mile, Mangalore



Inland Ethos (Res)
Mahamaye Temple Road, Mangalore



Inland Excellency (Res)
Arya Samaj Road, Mangalore



Inland Majestic (Res)
Warehouse Road, Mannagudda, Mangalore



Inland Monarch (Com/Res)
Kadri Main Road, Mangalore



Inland Elite (Res)
Near Navbharath Circle, Kodialbail, Mangalore



Inland Residency (Com/Res)
Valencia, Mangalore



Inland Enclave (Res)
Mannagudda, Mangalore



Embassy Plaza (Com)
Pumpwell, Mangalore



Inland Clusters (Res Villa)
Kottara Chowki, Mangalore



Sterling Chambers (Com)
Kodialbail, Mangalore



Golden Chambers (Com/Res)
Carstreet, Mangalore



Inland Exotic (Res)
Benson Town, Bengaluru



Inland Empress (Res)
R.T. Nagar, Bengaluru



Inland Elfin (Res)
Anand Nagar, Bengaluru



Inland Everglades (Res)
Hebbal, Kempapura, Bengaluru

and more ...

Location Map



Distance from the Site

| | | |
|---------------------|---|----------|
| NH 66 Kuloor | - | 1.5 KMS |
| Kavoor Junction | - | 1.5 KMS |
| Mahesh P.U. College | - | 2.3 KMS |
| Infosys | - | 3.0 KMS |
| NMPT | - | 3.0 KMS |
| MCF | - | 3.0 KMS |
| Panmbor Beach | - | 5.0 KMS |
| Airport | - | 9.0 KMS |
| MRPL | - | 10.0 KMS |



SINCE 1986

IN-LAND[®] INFRASTRUCTURE DEVELOPERS PVT. LTD.

"Inland Ornate", 3rd Floor, Navbharath Circle, Mangalore - 575 003.
 Phone: +91 824 - 2496110, 2492180, 2491795 Fax: +91 824 - 2496291
 E-mail: info@inlandbuilders.net Web: www.inlandbuilders.net
 Mobile : +91 98801 38019, +91 99720 14055, +91 98801 38015, +91 99720 89099



Find us on  /INLANDINFRASTRUCTURE

Membership Number : "IGBC - CS - 2083"

Regd. Office : "Abhilasha Arcade", # 495, 3rd Floor, CBI Road, R.T. Nagar, Bengaluru - 560 032, Telefax : +91 80 23545277 Mobile : +91 98801 45145

Dubai Office :
Inland General Trading LLC, 304-1 , Zabeel Business Centre, Behind Karama Post Office, Karama, Dubai, UAE, P.O Box - 28452
 Mobile : +971 50 9528974, Landline: +971 4 3955659